



## KYPHON® Balloon Kyphoplasty



A minimally invasive  
treatment for vertebral  
compression fractures

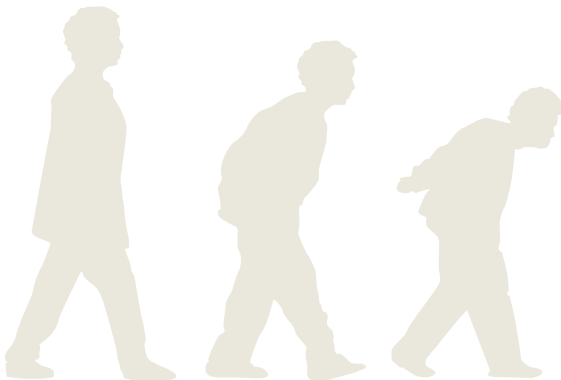


# About this booklet

Your doctor has determined that you have a vertebral compression fracture, also called a VCF. VCFs can cause severe back pain, limit your mobility, change the shape of your spine and affect your Quality of Life.

KYPHON® Balloon Kyphoplasty is a minimally invasive procedure designed to stabilise the fracture and to help correct the vertebral deformity. Your doctor may consider balloon kyphoplasty as a treatment option for you. This booklet explains why VCFs occur and how KYPHON® Balloon Kyphoplasty works.

This information can help you make an informed decision regarding your treatment. If you have any questions, please ask your doctor.



# The story behind your VCF

## What?

The bones in your spine are called vertebrae. The front part of each vertebra is called the vertebral body. A vertebral compression fracture (VCF) occurs when the vertebral body fractures and collapses.

## Cause

Most VCFs are caused by osteoporosis, a disease in which bones become fragile and are more likely to break.



Normal vertebral body



Fractured vertebral body

## Consequences for your spine

VCFs cause your spine to shorten and bend forward. This results in a hunched-over shape called kyphosis.

## Consequences for you

Kyphosis can cause chronic pain, breathing problems, loss of appetite and sleeping problems. When you have one or more VCFs, your general health can be seriously compromised.

# How it works:

## The four steps of KYPHON® Balloon Kyphoplasty

Before the treatment, you will have a medical examination and diagnostic studies (such as x-rays) to identify the vertebral compression fracture(s) causing your back pain. KYPHON® Balloon Kyphoplasty can be performed while you are under general or local anaesthesia. Your doctor will discuss which option is most appropriate for you. Generally, the procedure takes less than one hour per fracture treated.

# 1

The doctor makes a narrow, 1cm incision in your back and creates a very small pathway into the fractured bone.

# 2

A small balloon is inserted into the fractured vertebral body.



# 3

Next, the doctor carefully inflates the balloon to correct the deformity of the collapsed vertebral body. The balloon is then removed, leaving a cavity within the vertebra.



# 4

This cavity is filled with a bone cement to stabilise and fixate the fractured vertebra.



These four steps are performed on both sides (left and right) of the vertebral body. Your doctor will discuss with you how quickly you can leave the hospital and return to your daily activities.

## Understanding Your Risks

*As with any surgical procedure, there are potential risks. The procedure is designed to avoid these risks as much as possible, but there is a chance that complications may occur. You and your doctor should discuss the possible risks associated with this treatment and if this treatment is right for you. Please note that not all patients will benefit from this procedure. Only your doctor can determine the appropriate treatment for your individual condition.*

# Why consider KYPHON® Balloon Kyphoplasty?

KYPHON® Balloon Kyphoplasty is designed to:

- Provide fast and sustained pain relief
- Improve your ability to perform activities of daily living
- Keep an upright posture
- Improve your Quality of Life
- Correct the spinal deformity



For a consultation, please contact:

Insert contact details

MEDTRONIC  
Spinal and Biologics Business  
Worldwide Headquarters

2600 Sofamor Danek Drive  
Memphis, TN 38132

1800 Pyramid Place  
Memphis, TN 38132

(901) 396-3133  
(800) 876-3133

Customer Service: (800) 933-2635

[www.sofamordanek.com](http://www.sofamordanek.com)  
[www.kyphon.com](http://www.kyphon.com)

MEDTRONIC International Trading SÀRL.

Case postale  
Route du Molliau 31  
CH-1131 Tolochenaz

Tel. +41 (0)21 802 70 00

Fax +41 (0)21 802 79 00

listen. respond. deliver.

Although the complication rate with KYPHON® Balloon Kyphoplasty has been demonstrated to be low, as with most surgical procedures, there are risks associated with KYPHON® Balloon Kyphoplasty, including serious complications. For complete information regarding indications for use, contraindications, warnings, precautions, adverse events and methods of use, please reference the devices' Instructions for Use.

© 2008 Medtronic Inc. All Rights Reserved.

MK\_04.M00.08006-EN -01